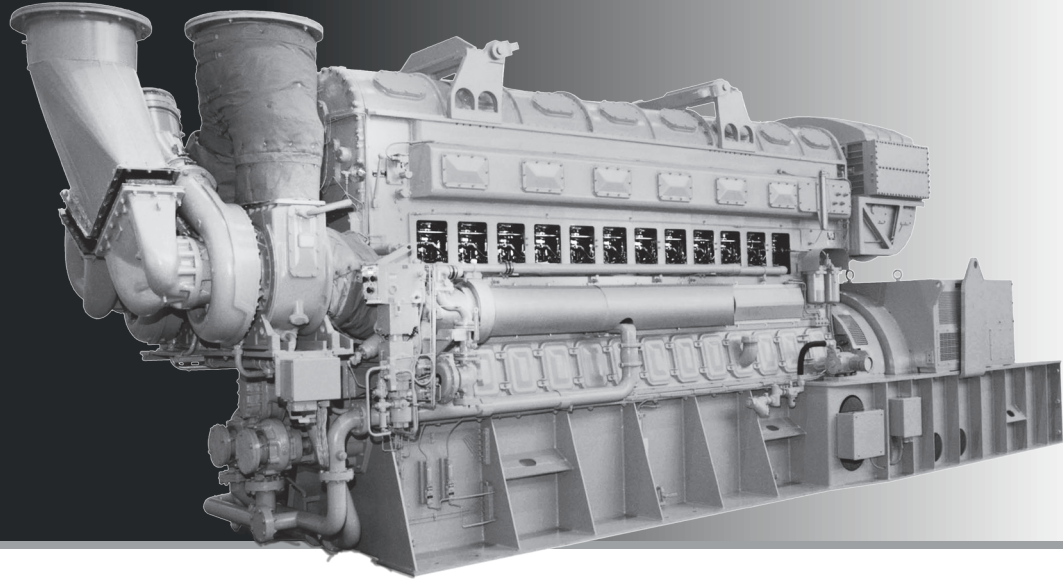


FM 38D 8-1/8

POWER RANGE
1,566 – 3,628 kWb



High Efficiency and Low-Emissions

The FM 38D 8-1/8 engine has been designed and developed for a wide array of electrical power generation and heavy industrial applications. This high efficiency, low-emission engine combines time-tested design features with modern advances, including dual-fuel technology suited for low-cost power production.

APPLICATIONS

- Power Generation
- Emergency Nuclear Reactor Cooling
- Compression
- Pumping
- Emergency Power

INSTALLATIONS

- Nuclear Power Plants
- Water Management Facilities
- Natural Gas Compressors
- Pump Drives
- Hospitals
- Municipalities
- Industrial Power Generation

KEY ADVANTAGES

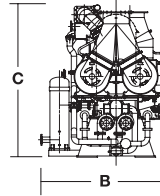
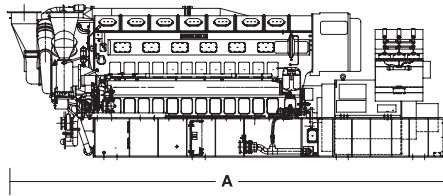
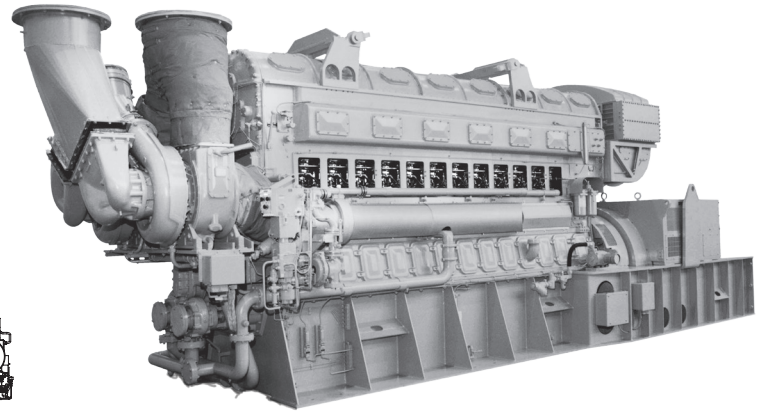
- 1% Pilot Fuel, 99% Gas
- Designed & developed for a wide array of electrical power generation and heavy industrial applications
- 40+ year service life
- Shock-qualified cylinder block with excellent maintenance access
- 40% thermal efficiency - simple cycle
- Automatic seamless switch from gas to diesel if gas supply is interrupted
- Base load (110% overload 2/24 hrs)
- Longer bearing life due to conservative operating speed

SPECIFICATIONS

Cylinder Configuration	6L, 9L, 12L	Displacement/Cylinder - L (cu in)	17.0 (1,037)
Cylinder Bore-mm (in)	206.3 (8.125)	Mean Piston Speed - m/s (ft/s)	7.6 (25.0) 900 rpm 8.5 (27.8) 1,000 rpm
Piston Stroke-mm (in)	254 (10.0)	BMEP - bar (psi)	9.2 - 10.8 (134 - 157)
Cycle	2 Stroke		

FM 38D 8-1/8

POWER RANGE
1,566 – 3,628 kWb



POWER RATINGS			DIMENSIONS			
Cylinders	Aspiration	900 RPM	Length A mm	Width B mm	Height C mm	Dry Weight M tons
		60Hz kW _e / 1,000 RPM 50Hz kW				
6L	Turbo-blower Turbocharged	1,506 1,580	6,262	2,471	3,307	25
9L	Turbo-blower Turbocharged	2,260 2,370	8,186	2,407	3,239	33
12L	Turbo-blower Turbocharged	3,013 3,165	9,304	2,662	3,239	38

NOTES

All ratings subject to factory approved application. Ratings are based on: 90°F (32.2°C) ambient temp. 28.25 in Hg (71.8 cm Hg) barometric pressure (min). 1,500 ft. (457 m) altitude (max). Standby ratings available. The kW_e ratings are based on generators with nominal efficiencies of 96.2%.

FAIRBANKS MORSE **DEFENSE**

701 White Avenue
Beloit, Wisconsin 53511 USA
1-800-356-6955

FM.Marketing@fmdefense.com

©2022 Fairbanks Morse Defense. All rights reserved. Form 3007.0122

fairbanksmorsedefense.com